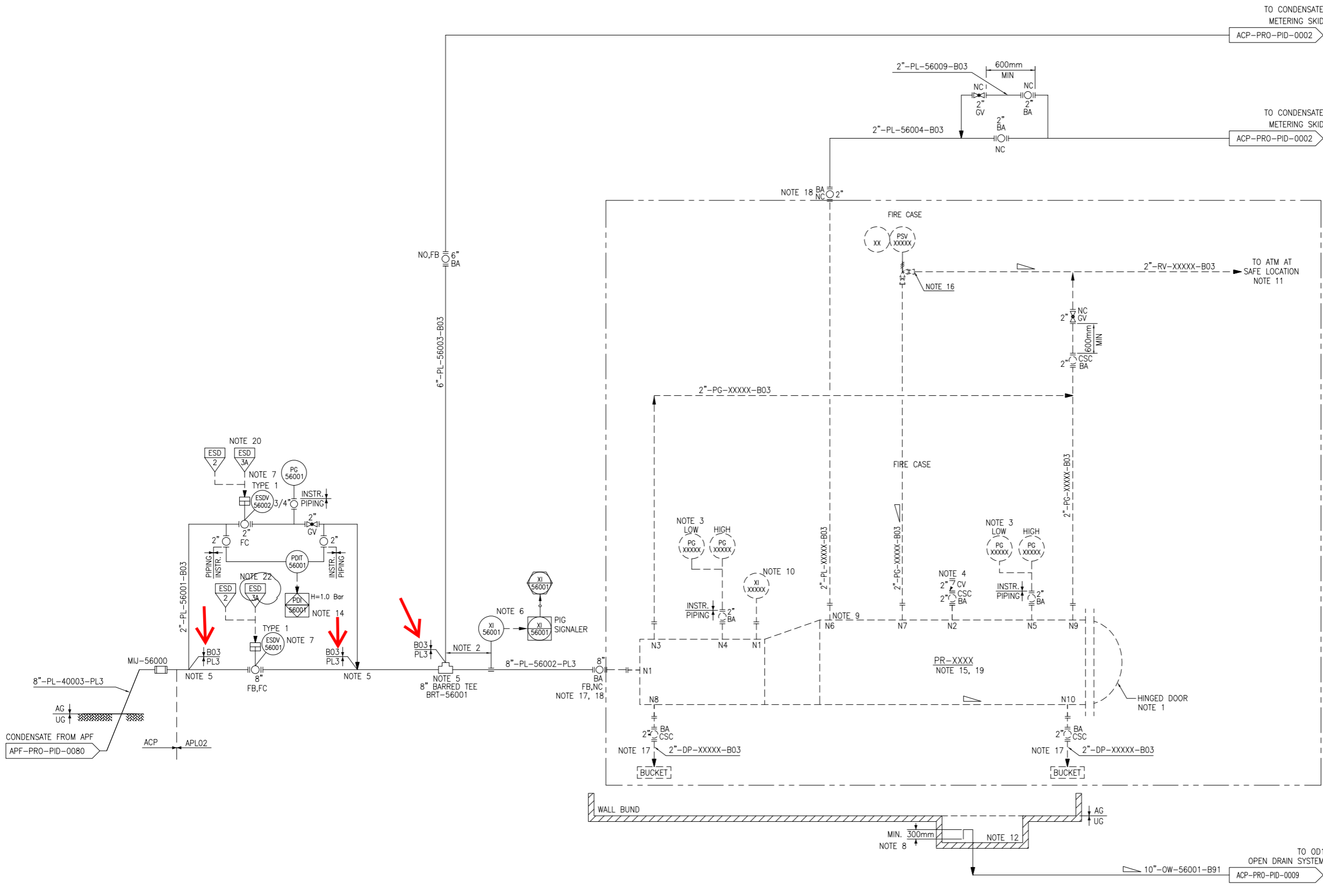


PR-XXXX (NOTE 15)
MOBILE PIG RECEIVER
 MINOR BARREL : (NOTE 15)
 MAJOR BARREL : (NOTE 15)
 DESIGN PRESSURE : 18.6 Barg (HOLD 1)
 WORKING PRESSURE : 1.9 Barg
 DESIGN TEMPERATURE : 70 C
 WORKING TEMPERATURE : 20.65-44.52
 NORMAL CAPACITY : 132.5 m3/hr
 SYSTEM CONFIGURATION : 1x100%
 MATERIAL : (NOTE 15)
 CORROSION ALLOWANCE : (NOTE 15)



- NOTES:**
1. PROVIDE DOOR SAFETY MECHANICAL INTERLOCK TO PREVENT PIG TRAP DOOR OPENING WHEN UNDER PRESSURE.
 2. PIG SIGNALER SHALL BE LOCATED AT MINIMUM DISTANCE OF ONE INTELLIGENT PIG LENGTH FROM THE BARRED TEE.
 3. RANGE OF LOW PRESSURE GAUGE SHALL BE 0~1 Bar WITH PRESSURE LIMITING DEVICE PROTECTION GAUGE FROM OVER PRESSURE.
 4. NITROGEN PURGE.
 5. CONNECTION AT TOP OF PIPE.
 6. NON-INTRUSIVE TYPE E.G. MAGNETIC TYPE.
 7. THE DISTANCE OF VALVE IS TO BE MINIMUM 15 METERS FROM PROTECTING ZONE. IF IT IS NOT FEASIBLE, THE PASSIVE FIRE PROTECTION (PPF) ON VALVE INCLUDING ACTUATOR AND ACTUATING SYSTEM SHALL BE PROVIDED.
 8. 300 mm U-SEAL IS PROVIDED.
 9. TOP OF PIG RECEIVER CONNECTION.
 10. INTRUSIVE TYPE PIG SIGNALER.
 11. TERMINATED AT SAFE LOCATION WITH PORTABLE BUCKET OR LIQUID SUMP.
 12. BUND WITH GRATING COVER.
 13. THIS VALVE TO BE OPEN TO EQUALIZE MINOR AND MAJOR BARREL SECTION BEFORE MANUAL DEPRESSURIZE PIG SYSTEM.
 14. NON-AUDIBLE ALARM, INTERLOCKING LOGIC TO BE PROVIDED NOT TO OPEN ESDV-56001 WHEN PDIT-56001 IS HIGHER THAN 1 Bar.
 15. MOBILE PIG RECEIVER PROVIDED BY OTHER.
 16. DISTANCE BETWEEN PSV AND REDUCER TO BE MINIMIZED. INSTALLATION OF ELBOW BETWEEN PSV AND REDUCER IS FORBIDDEN.
 17. VALVE SHALL BE LOCATED UNDER BUND AREA.
 18. BLIND FLANGE TO BE PROVIDED BY EPC CONTRACTOR.
 19. TO AVOID EXTERNAL BUFFER STORAGE, THE PIGGING, METERING CALIBRATION TO BE PLANNED DURING CONDENSATE LOADING OPERATION FLOWING TO BUNKER BARGE.
 20. THE ESD-3A (ACP) WILL BE NORMALLY ACTIVATED BY ESD-2 (ACP) AND INTERFACE SIGNAL PALL-40007 FROM APF.

- HOLDS:**
1. PRELIMINARY, PIPELINE DESIGN PRESSURE IS SUBJECTED TO SURGE PRESSURE STUDY. TO BE CONFIRMED BASED ON RESULT FROM CONDENSATE EXPORT SURGE ANALYSIS.



REV	DESCRIPTION	DATE	BY	CHECK	APPR.	CHECK	APPR.
A1	ISSUED FOR REVIEW	01/06/26	WYW	GMJ	XF		

Total or partial reproduction and/or utilization of this document are forbidden without prior written authorization of the owner.

PTTEP International Limited
AUNG SINKHA DEVELOPMENT PROJECT PHASE 1A
ACP PIPING AND INSTRUMENT DIAGRAM
INCOMING PIPELINE AND PIG RECEIVER

SCALE : NONE
 DRAWING NO. MM-ASK-1A-ACP-PRO-PID-0001
 SHEET 1/1
 REV. A1